

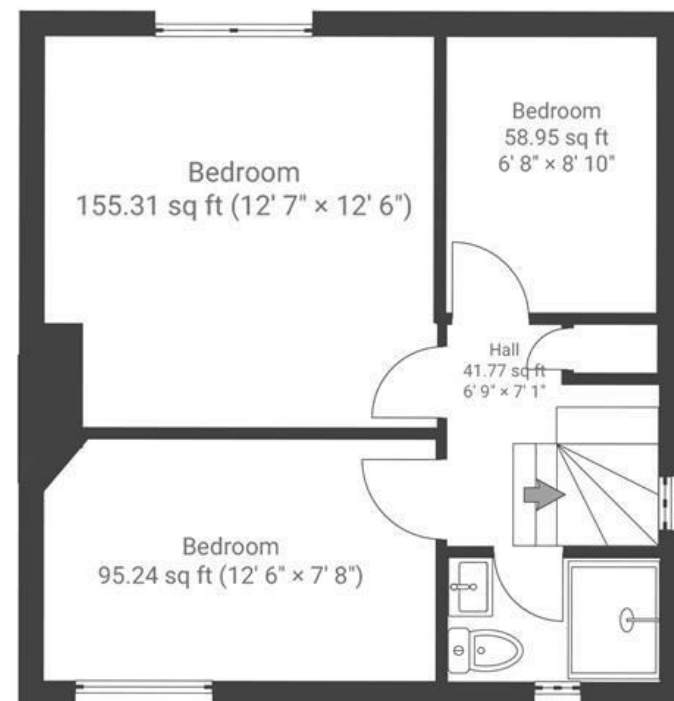
Derwent Road

SPEEDWELL

APPROXIMATE FLOOR AREA
73.7 SQM / 794 SQFT



GROUND FLOOR



FIRST FLOOR

Boardwalk

Derwent Road

SPEEDWELL, BRISTOL



£325,000



3 Bedrooms



BS5 7SL



1 Bathrooms

"Derwent Road has been a wonderful place to call home. Set on a quiet residential hill just moments from the lively energy of Church Road and the open green space of St George's Park, it offers the perfect balance of convenience and calm. You're close to everything you need, yet far enough away to enjoy peace and privacy. Perched to catch both the sunrise and sunset, the house is bathed in natural light from dawn till dusk. The garden soaks up the sun too - a well-established outdoor space featuring two stunning magnolia trees, a mix of vibrant seasonal flowers, and plenty of room for growing vegetables or simply enjoying a quiet morning coffee. Inside, the house stays bright and uplifting during the day, and turns warm and cosy by night. It's a colourful, creative space - full of light, life, and the little details that make everyday living feel special."

